

## Techwin Avigilon Control Center™ PTZ Auto-Tracking

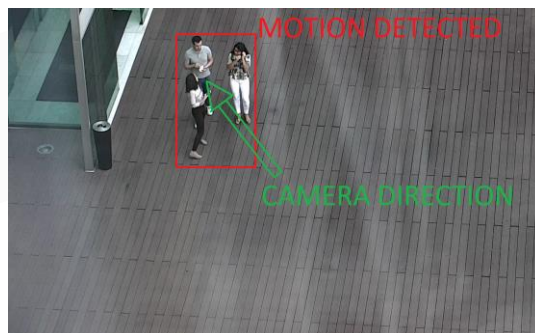
### What it is?

The Techwin Avigilon Control Center (ACC™) PTZ auto-tracking plug-in is a custom 3<sup>rd</sup> party software package that enables Avigilon™ PTZ Cameras connected to the ACC server software to auto-track movement in their field of view.

### What it does?

The Techwin auto-tracking software auto-discovers all ACC sites available in the network and connects to them acquiring the video streams and control of the associated PTZ cameras.

When the Techwin auto-tracking function is enabled for a specific PTZ camera, the software analyses the images from the PTZ camera stream and detects any movement in the camera FoV. It then request the ACC server to move the camera towards the area where motion was detected.



### Minimum requirements

Computer:

- OS: Windows 64 bits (language independent)
- RAM: 4 GB or higher
- HDD: 100 MB or higher
- GPU card: dedicated graphics card is preferred
- .NET Framework: 4.6.2

### Compatibility

ACC server

- Compatible with all ACC server 6.0 versions

Cameras

- Compatible with all Avigilon PTZ cameras

### Detection Algorithm

- The primary motion detection method is pixel differentiation between 2 frames.
- After motion detection is completed for the PTZ camera FoV, the Techwin auto-tracking software calculates the coordinates of all areas where motion was detected.
- It then moves the camera towards the center position of the areas where motion was detected.

The maximum number of simultaneous PTZ cameras with auto-tracking enabled is hardware resources dependent only.

#### MORE INFO:

Please visit our website for more info about this product and others:

[www.techwin-systems.com](http://www.techwin-systems.com)

#### TECHNICAL SUPPORT:

[support@techwin-systems.com](mailto:support@techwin-systems.com)

(+351) 211 946 467

#### ORDER:

[order@techwin-systems.com](mailto:order@techwin-systems.com)

(+351) 211 946 467