



Monitor and control Senstar sensors within Avigilon Control Center (ACC)

The NMS-ACC provides a software integration between Senstar perimeter intrusion detection sensors and the ACC software, avoiding the need for relay output modules and corresponding hardware intrusion panels.

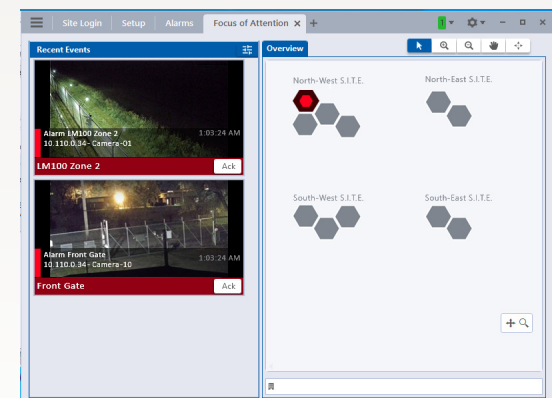
Senstar's Network Manager software provides a common interface for monitoring Senstar sensors from VMS, SMS, and PSIM systems. The Network Manager Service includes functionality to integrate Senstar sensors and devices with ACC via its POS Transactions interface. The Network Manager software also includes a Watchdog service, ensuring that any loss of communications between the sensor network and ACC generates a notification

From within ACC, operators can:

- View sensor alarms in Alarm or Focus of Attention windows
- View video associated with alarms
- Acknowledge alarms
- Monitor equipment faults
- Monitor communication status

Features and Benefits

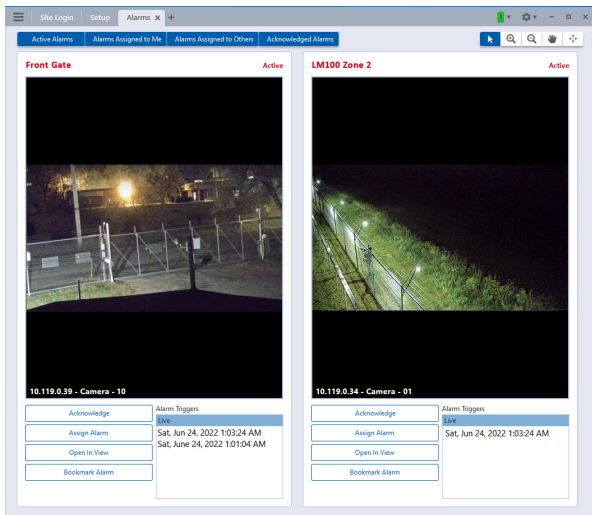
- Display zone alarms, hardware diagnostic faults, and communication faults from Senstar sensors within ACC
- Sensor events are received as POS Transactions that can be selected for monitoring and used to trigger alarms and rules
- Watchdog timer ensures any loss of communications between sensor network and ACC generates a notification
- Support for Network Manager redundancy
- Supported sensors include FlexZone®, FiberPatrol® FP1150, FiberPatrol® FP400, Senstar LM100, OmniTrax®, UltraWave™, UltraLink™ I/O, and XField®
- Alarm Logic Engine support
- Based on the ACC POS Generic Text interface)
- Compatible with ACC version 7.14.12.6 and NMS 2.54 or newer



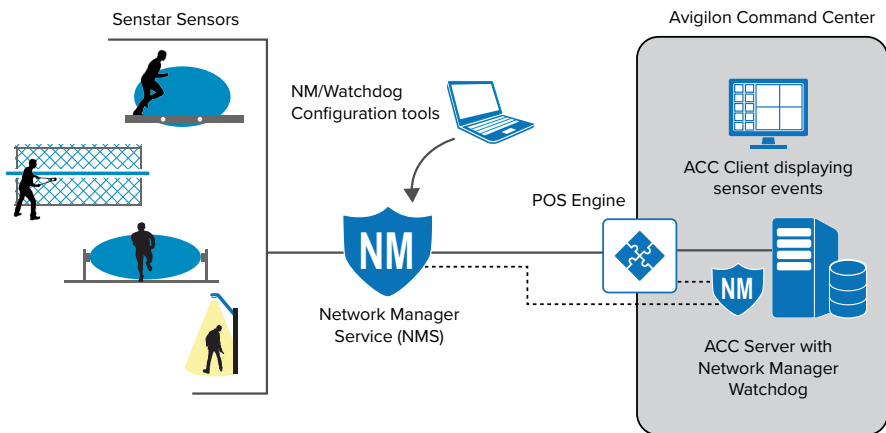
Avigilon Control Center integrated with Senstar perimeter intrusion detection sensors

ACC USER INTERFACE

Senstar sensor alarms appear in ACC as POS Transaction events, which can be used to trigger alarms, camera callups, and rules.



SYSTEM INTEGRATION



NMS-ACC system integration

CONFIGURATION OVERVIEW

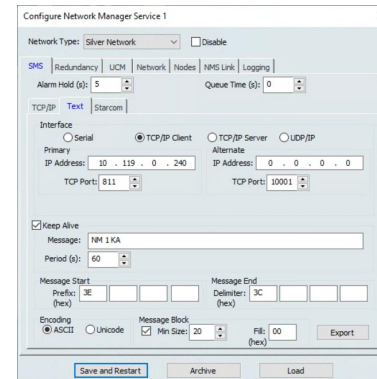
Configuration consists of three main steps:

1. Configure the Senstar Network Manager software.
2. Install and configure Senstar's NM Watchdog software on the ACC server.
3. Configure the ACC software to accept NM events via its POS Transactions interface.

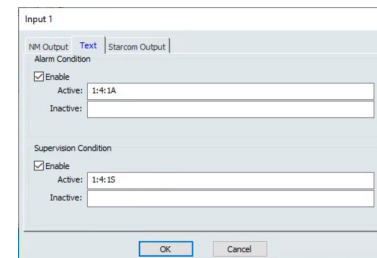
Configure SMS Settings in NMS Front Panel

1. In the NMS Front Panel, enter the SMS properties for the sensor network under the Text tab:

Parameter	Value
Server interface type, TCP addresses and ports	As required
Message Start prefix	3E
Message End delimiter	3C
Encoding	ASCII
Message Block Min Size	40
Message Block Fill	00



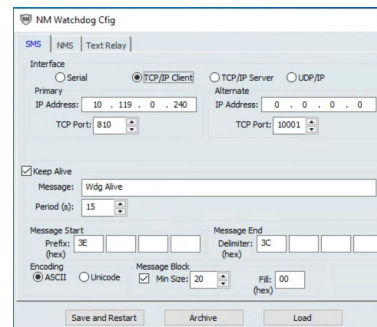
In the Nodes tab, enter text strings for the ON state of every sensor alarm to be reported in ACC. Define strings for OFF states only if you want to program something like an auto-acknowledge when alarm goes inactive (in this case, it would still require a "purge" step in ACC).



Install NMS Watchdog

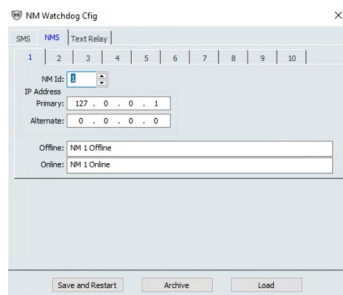
1. Install Senstar's NMS Watchdog (included in the NM software suite) on the ACC server.
2. In the NM Watchdog Cfg, enter the SMS properties under the SMS tab:

Parameter	Value
Server interface type, TCP addresses and ports	As required
Message Start prefix	3E
Message End delimiter	3C
Encoding	ASCII
Message Block Min Size	40
Message Block Fill	00



3. On NMS tabs (one for each NMS to be monitored):

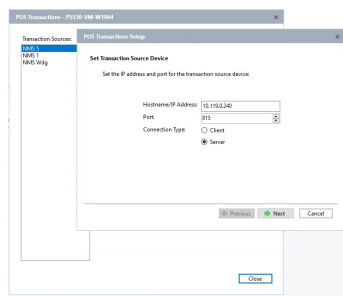
- Enter the NM Id and IP address.
- Enter a text string for the Offline state. Define strings for Online state only if you want to program something like an auto-acknowledge when alarm goes inactive (in this case, it would still require a “purge” step in ACC).



Configure ACC

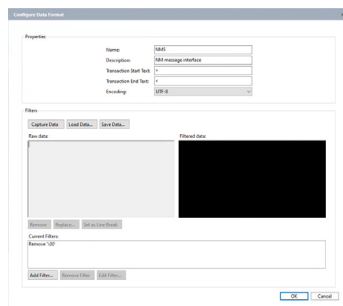
1. In Setup > POS Transactions, define a POS transaction source (one for NMS Watchdog and each NMS instance):

- Enter the IP and TCP port number to connect to Watchdog/NMS as well as the Client connection type.



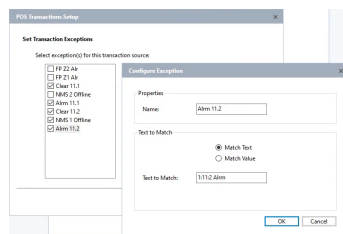
b. Define Transaction Source Data Format:

Parameter	Value
Name	NMS
Description	NMS message interface
Transaction Start Text	>
Transaction End Text	<
Encoding	UTF-8
Filters	Remove '\00'

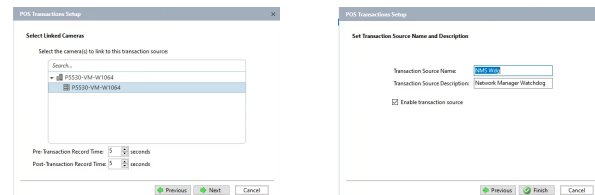


Set Transaction Exceptions for each Watchdog/NMS alarm:

- Enter a unique name for each alarm reported.
- Enter a text string matching the entry in NMS.

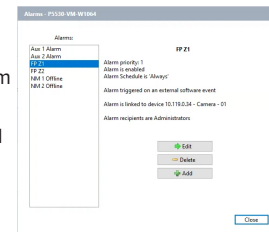


c. Select Linked Cameras and save the transaction's name and description.



2. In Setup > Alarms, create an entry for each Watchdog/NMS alarm:

- Select Alarm Trigger Source for External Software Event.
- Select device to link to alarm (suggest camera with view of alarm detection zone).
- Select alarm recipients (users to be notified of alarm) and sound to be played when alarm triggered.
- Define Alarm properties (Display name, priority, schedule).



3. In Setup > Rules, define rules that link Transaction Exceptions to alarms (for each Watchdog/NMS alarm):

- Select Rule event to trigger rule of POS transaction exception:
 - Specify the transaction exception using the previously defined name.
 - Specify the transaction source using the previously defined source.
- Select Action of triggering an alarm.
- Select one of the alarms defined above.
- Define Rule Properties (Display name, schedule).

