

Avigilon Control Center System Integration Guide

with Software House C•Cure 9000



Copyright © 2011 Avigilon. All rights reserved.

No copying, distribution, publication, modification, or incorporation of this document, in whole or part, is permitted without the express written permission of Avigilon. In the event of any permitted copying, distribution, publication, modification, or incorporation of this document, no changes in or deletion of author attribution, trademark legend, or copyright notice shall be made. No part of this document may be reproduced, stored in a retrieval system, published, used for commercial exploitation, or transmitted, in any form by any means, electronic, mechanical, photocopying, recording, or otherwise, without the express written permission of Avigilon.

Software House, C•Cure and C•Cure 9000 are registered trademarks of Tyco International Ltd and its respective companies.

Avigilon has made every effort to identify trademarked properties and owners on this page. All brands and product names used in this document are for identification purposes only and may be trademarks or registered trademarks of their respective companies.

Avigilon
Tel +1.604.629.5182
Fax +1.604.629.5183

<http://www.avigilon.com>

Revised 2011-3-24

Table of Contents

Introduction	1
Requirements	1
For More Information	1
Installation	2
Servers	2
Client	2
Checking the License in Avigilon	2
Checking the License in C•Cure 9000	2
Enabling the Integration in C•Cure 9000	3
Avigilon Configuration	4
Assigning Logical IDs to Cameras	4
Adding an Integration User in Avigilon	5
C•Cure 9000 Configuration	6
Adding Avigilon Servers and Cameras	6
Adding Server Alarms	7
Adding Camera Alarms	8
Using the Integration	10

Introduction

The Avigilon Control Center system integration with the Software House C•Cure 9000® software allows users to use the C•Cure 9000 interface to access Avigilon Control Center features. Specifically, users can view live and recorded video, and control PTZ devices from the Avigilon Control Center through the C•Cure 9000 software.

Requirements

Vendor	Requirements
Avigilon	Control Center Server Software 4.x and later
Avigilon	Control Center Client Software 4.x and later
Avigilon	Avigilon Third Party Integration Licence: ACC-CCURE9-NVR
Avigilon	Avigilon-C•Cure 9000 integration executable file: Avigilon CCure Integration-4.6.6.x.exe The file can be downloaded at http://avigilon.com/support/software/int/
Software House	C•Cure 9000 version 1.93
Software House	C•Cure 9000 Integration Software License: CC9000-AVIGILON

For More Information

For more detailed information about the procedures outlined in this guide, refer to the specific software documentation.

- *Avigilon Control Center Client User Guide*
- *Avigilon Control Center Server User Guide*
- *C•Cure 9000 Help*
- *C•Cure 9000 Server Management Application User Guide*
- *C•Cure 9000 Licensing User Guide*

Installation

All C•Cure 9000 services and components must be turned off before the integration can be installed.

The Avigilon-C•Cure 9000 integration software (`Avigilon CCure Integration-4.6.6.x.exe`) must be installed on either a server or client that is connected to your C•Cure 9000 system.

Servers

Install the following on any server in your network.

- C•Cure 9000 server software
- Avigilon Control Center Server software

Client

- Install the C•Cure 9000 client software on any workstation that requires access to the C•Cure 9000 system.

Checking the License in Avigilon

After you have installed all the required software, check that the Avigilon Third Party Integration license was properly applied.

1. Open the Avigilon Control Center Admin Tool.
2. Select the **Settings** tab and click **Licensing**. The License Activation dialog box appears.

The dialog box must say *Integration Connections: unlimited* or the software was not properly licensed.

Checking the License in C•Cure 9000

1. Open the C•Cure 9000 License application.
2. Select **License > Validate**.
A popup dialog box appears and notifies you if all licenses are valid.
3. Select the Options tab and check that the Avigilon Control Center is listed.

Enabling the Integration in C•Cure 9000

After you check the licenses, you must enable the integration in the C•Cure 9000 software.

1. Open the C•Cure 9000 Server Management Application.
2. Ensure the CrossFire Service and Server Component Framework are running. If not, click **Start Server Component Framework**.
3. Select the Server Components tab.
4. Right-click the Avigilon server component and select **Start server component**. The server component is labeled `Avigilon.NextGenConnectedProgram.Server`.

The traffic light icon beside the Avigilon server component turns green.

Avigilon Configuration

Once the required licence and software have been installed, configure the Avigilon Control Center for the integration.

See the *Avigilon Control Center Client User Guide* for more information about each of the required configurations.

Assigning Logical IDs to Cameras

In the Avigilon Control Center Client software, assign a logical ID to each camera. The C•Cure 9000 software will only detect cameras with a logical ID. By default, cameras do not have a logical ID.

1. In the Avigilon Control Center Client software, right-click a camera in the System Explorer and select **Setup**.
2. In the camera Setup dialog box, click **General**.
3. In the General settings dialog box, enter a **Logical ID** for the camera.

The logical ID must be unique number.

The logical ID should have no more than nine digits.

The screenshot shows a Windows-style dialog box titled "General - 1.0MP-HD-DN". It contains the following fields and controls:

- Camera Name: 1.0MP-HD-DN
- Camera Location: Building A
- Logical ID: 101
- Disable camera status LEDs
- PTZ** section (expanded):
 - Enable PTZ
 - Protocol: Pelco D
 - Dip Switch Address: 1
 - Baud Rate: 2400
 - Parity: None
- Reboot Camera... button
- OK, Cancel, and Apply buttons at the bottom.

Adding an Integration User in Avigilon

To protect the security of the Avigilon Control Center Server, add an Avigilon user only for connecting the integration. See the *Avigilon Control Center Client User Guide* for details about how to add users.

This user must have the following permissions to enable all the integration features:

- View Live Images
 - Use PTZ Controls
 - Lock PTZ Controls
 - Trigger Manual Recording
- View Recorded Images
 - Export Images
 - Backup Recorded Images

The integration user name and password is used to add Avigilon servers to the C•Cure 9000 application.

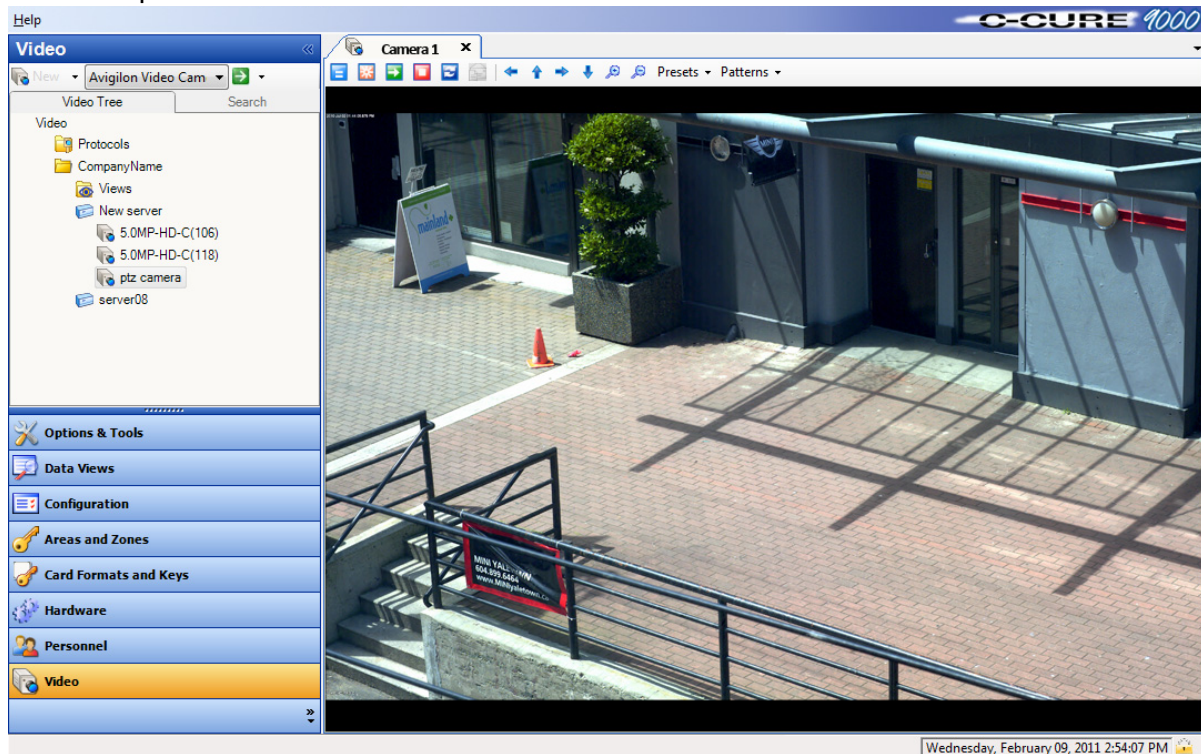
C•Cure 9000 Configuration

After the Avigilon Control Center configurations are complete, configure C•Cure 9000 to use the integration.

See the *C•Cure 9000 Help* for more information about each of the configurations.

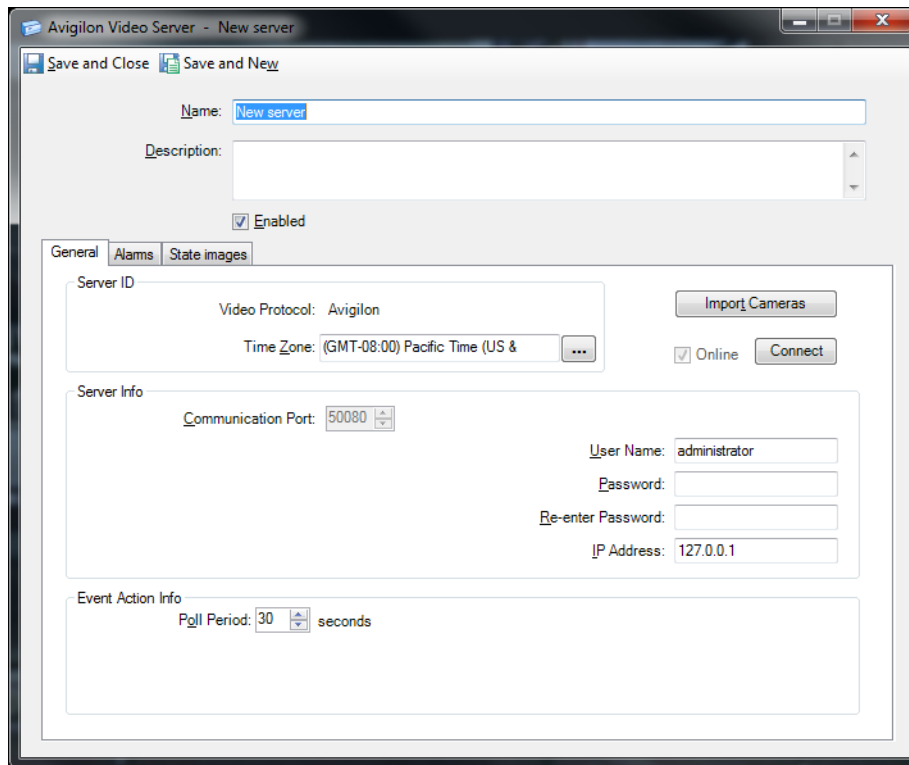
Adding Avigilon Servers and Cameras

1. Open the C•Cure 9000 Administration Workstation.



2. Select the Video tab.
3. In the Video Tree pane, right-click **Company Name** and select **Avigilon Video Server > New**.

- In the Video Server Editor, give the server a name and description.



- Enter the username and password you created for the integration. See *Adding an Integration User in Avigilon* on page 5 for more information.
- Enter the Avigilon server IP address.
If the integration software was installed on the same server as the Administration Workstation software, enter the localhost IP address instead (typically 127.0.0.1).
- Select the **Enable** check box then click **Connect**. Once connected, the Enable check box will change to Online.
- Click **Import Cameras**.
All the cameras that have logical IDs are imported into the C•Cure 9000 system. See *Assigning Logical IDs to Cameras* on page 4 for more information.
- Click **Save and Close**.

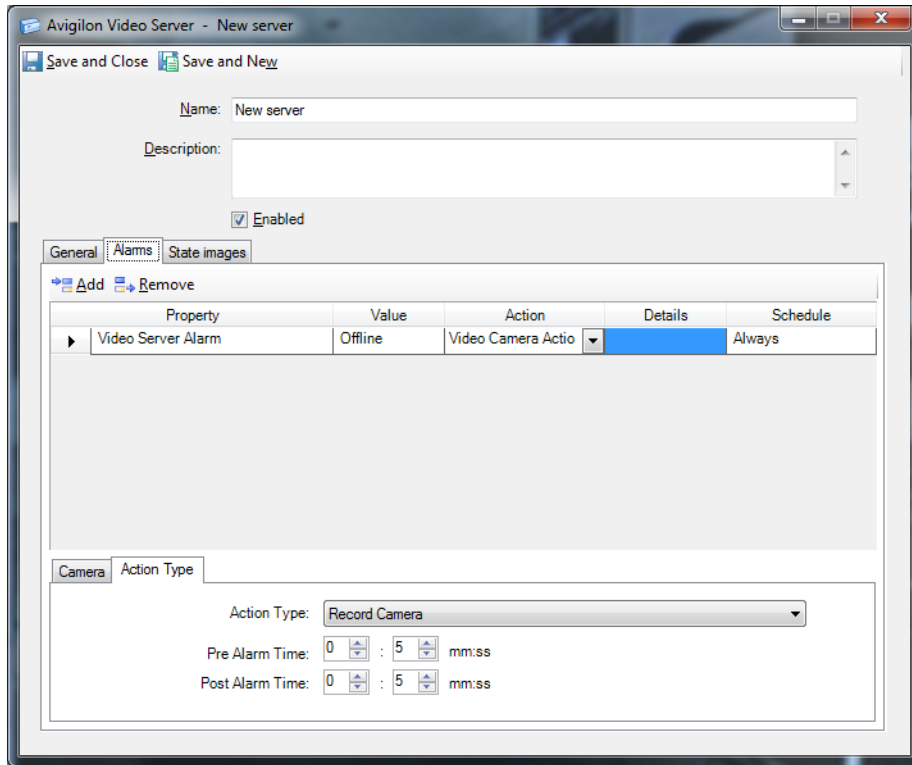
The new server and imported cameras are added to the Video Tree pane.

Adding Server Alarms

You can create a server alarm that is triggered by the Avigilon server's online or offline status.

- Open the C•Cure 9000 Administration Workstation.
- In the Video Tree pane, right-click the Avigilon server and select **Edit**.

3. In the Video Server Editor, select the Alarms tab then click **Add**.



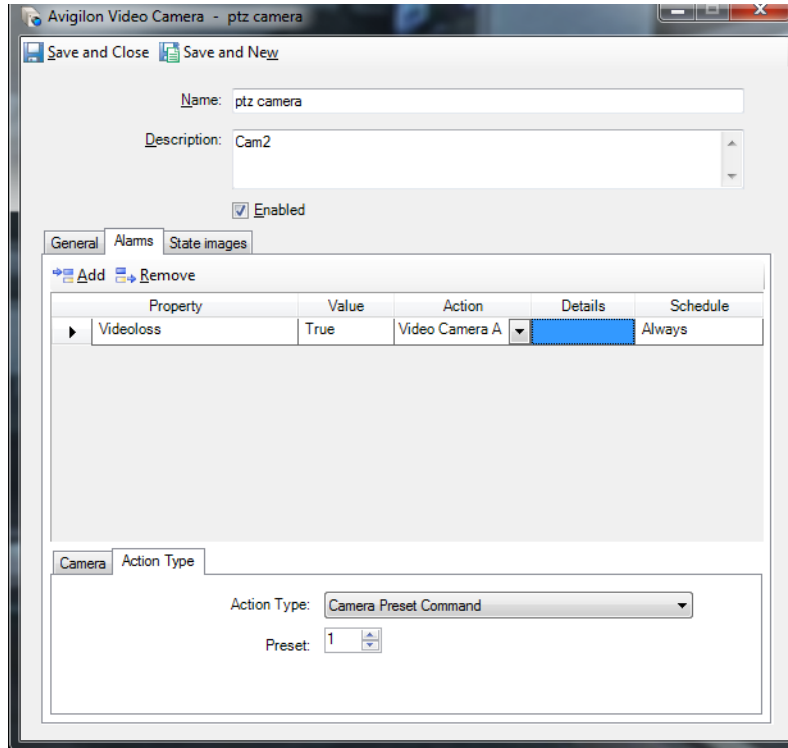
4. In the Property column, select **Video Server Alarm**.
5. In the Values column, select what triggers the alarm — when the server becomes **Offline** or **Online**.
6. In the Action column, select how you want C•Cure 9000 to respond to the alarm.
7. If you selected **Video Camera Action**, select the Action Type tab and select what the camera will do.
8. In the Schedule column, select when the alarm can be triggered.
9. Click **Save and Close**.

Adding Camera Alarms

You can add a camera alarm that is triggered by a camera event, like motion detection.

1. In the C•Cure 9000 Administration Workstation, right-click a camera in the Video Tree pane and select **Edit**.

2. In the Video Camera Editor, select the Alarms tab then click **Add**.



3. In the Property column, select **Video Camera Alarm**. If you are configuring an analog encoder, you can also select **Videoloss**.
4. In the Value column, select what triggers the alarm.
 - If you selected the Video Camera Alarm property, select **Motion**.
 - If you selected the Videoloss property, select **True** or **False**.
5. In the Action column, select how you want C•Cure 9000 to respond to the alarm.
6. Select the Action Type tab to further define the selected Action setting.
7. In the Schedule column, select when the alarm can be triggered.
8. Click **Save and Close**.

Using the Integration

Now that the integration has been installed and configured, you can use the C•Cure 9000 system to monitor video and alarms detected by cameras connected to the Avigilon system.

See the *C•Cure 9000 Help* for more information about using the different features in the C•Cure 9000 system.